



# ERTmiral

EngRoTec's fleet manager keeps an eye on your autonomous mobile robots.



## ERTmiral FLEET MANAGER

The ERTmiral is a middleware that connects the OMRON Fleet Operations Workspace Core with a customer's production control system (MES, ERP).

In addition, for the convenience of the operator, we have created a simple overview of the entire fleet. Not only mobERTs, but also all other configurations of other mobile robots can be managed here. The intuitive operation allows to easily add new jobs, integrate new robots or monitor the status of the fleet.

## FEATURES



**SIMPLICITY**  
Intuitive interface enables simple operation without automation expertise.



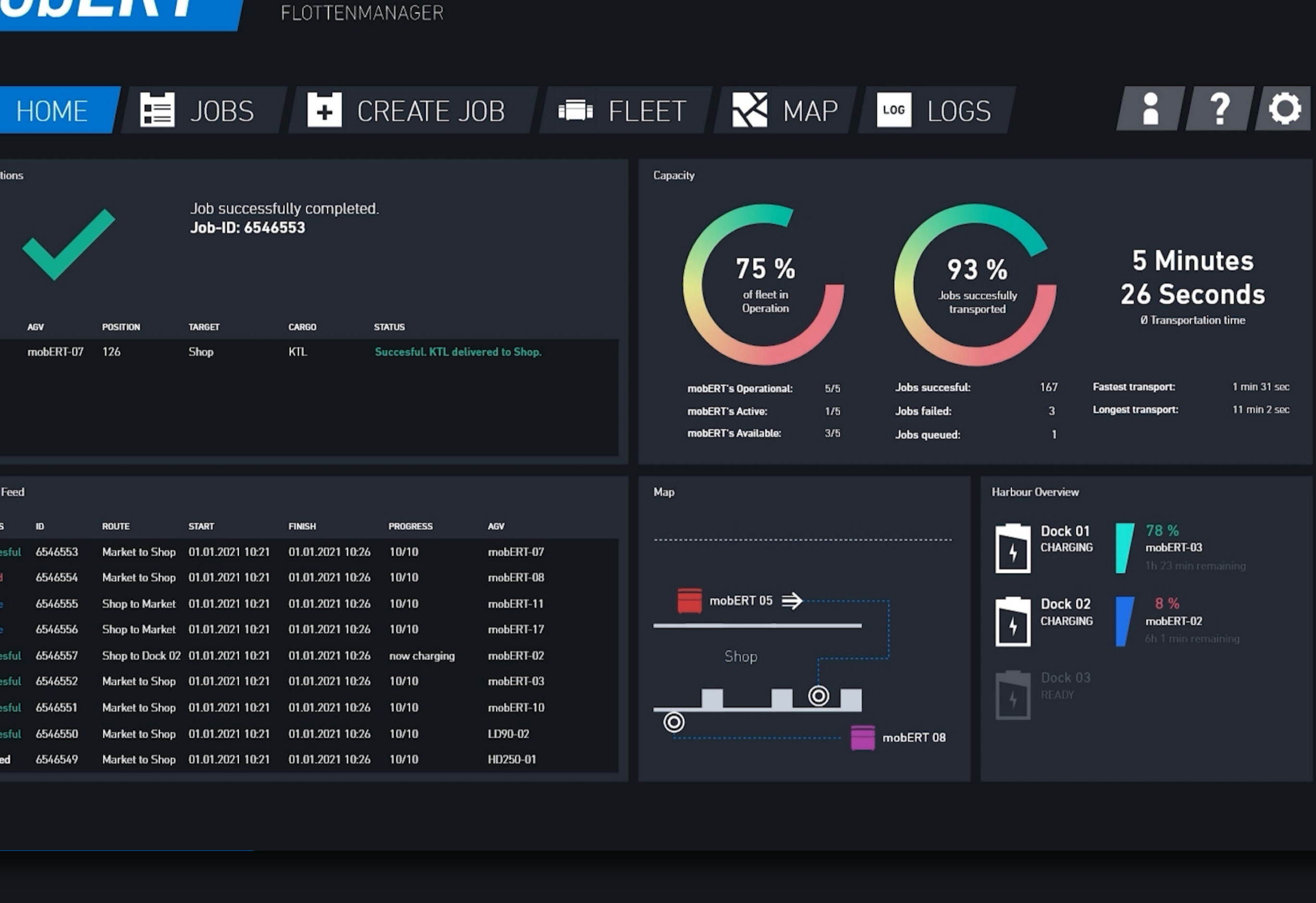
**FLEXIBILITY**  
Coordination of different robots, types & superstructures for an optimal distribution of tasks.



**RELIEF**  
The ERTmiral takes over the complicated coordination and order management for you.



**ECONOMIC EFFICIENCY**  
Highly efficient job management and fleet utilization ensure the optimal utilization.



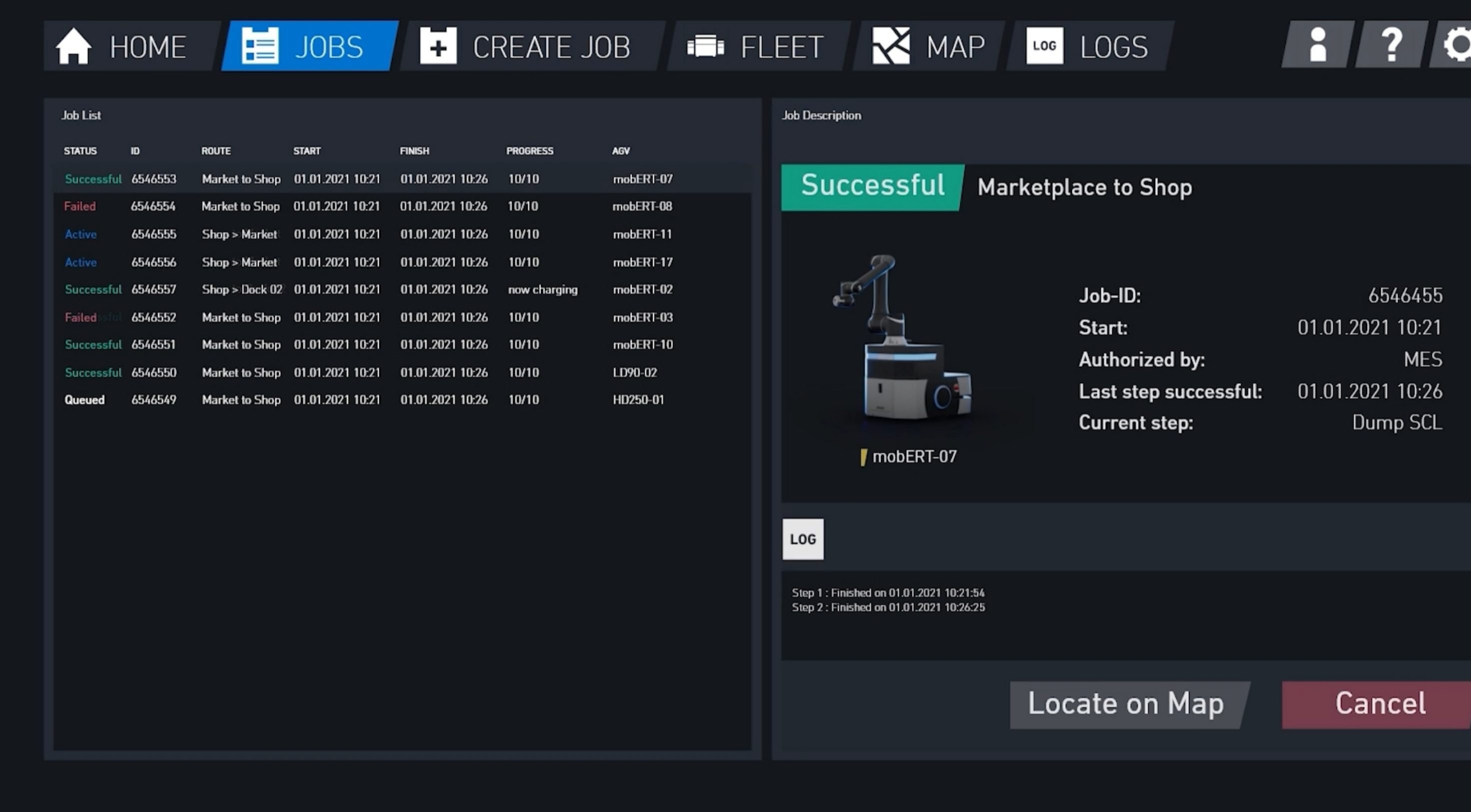
## DASHBOARD

The dashboard gives you a quick overview of the throughput and efficiency of your fleet. Get updates on current jobs, keep an eye on your job queue, and get reports on your system.

## SIMPLE ORDER MANAGEMENT

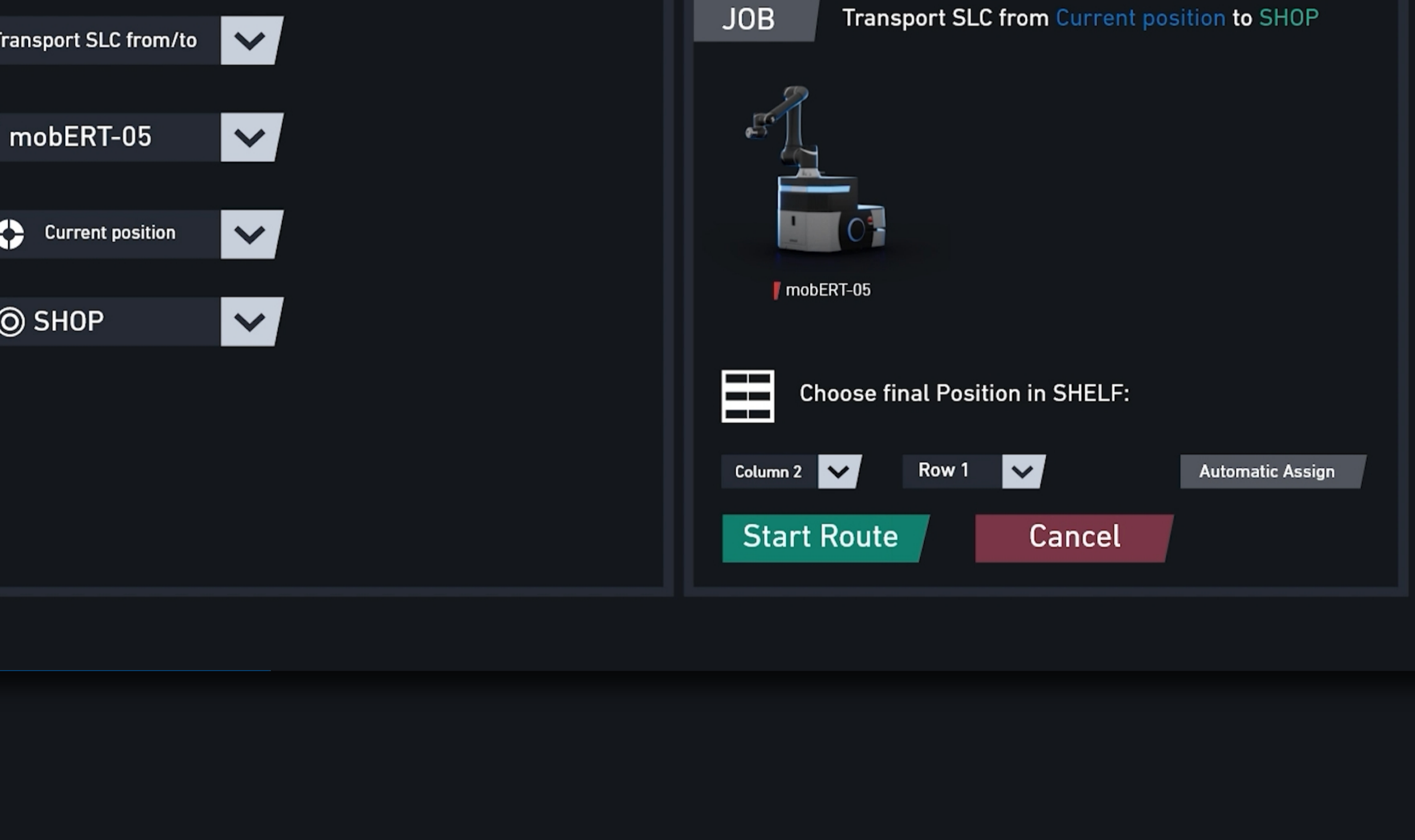
ERTmiral keeps track of your job queue for you. Call up detailed information such as description, job history and logs for each task.

Additionally you have the possibility to display the called job on the maps.



## SIMPLE ORDER CREATION

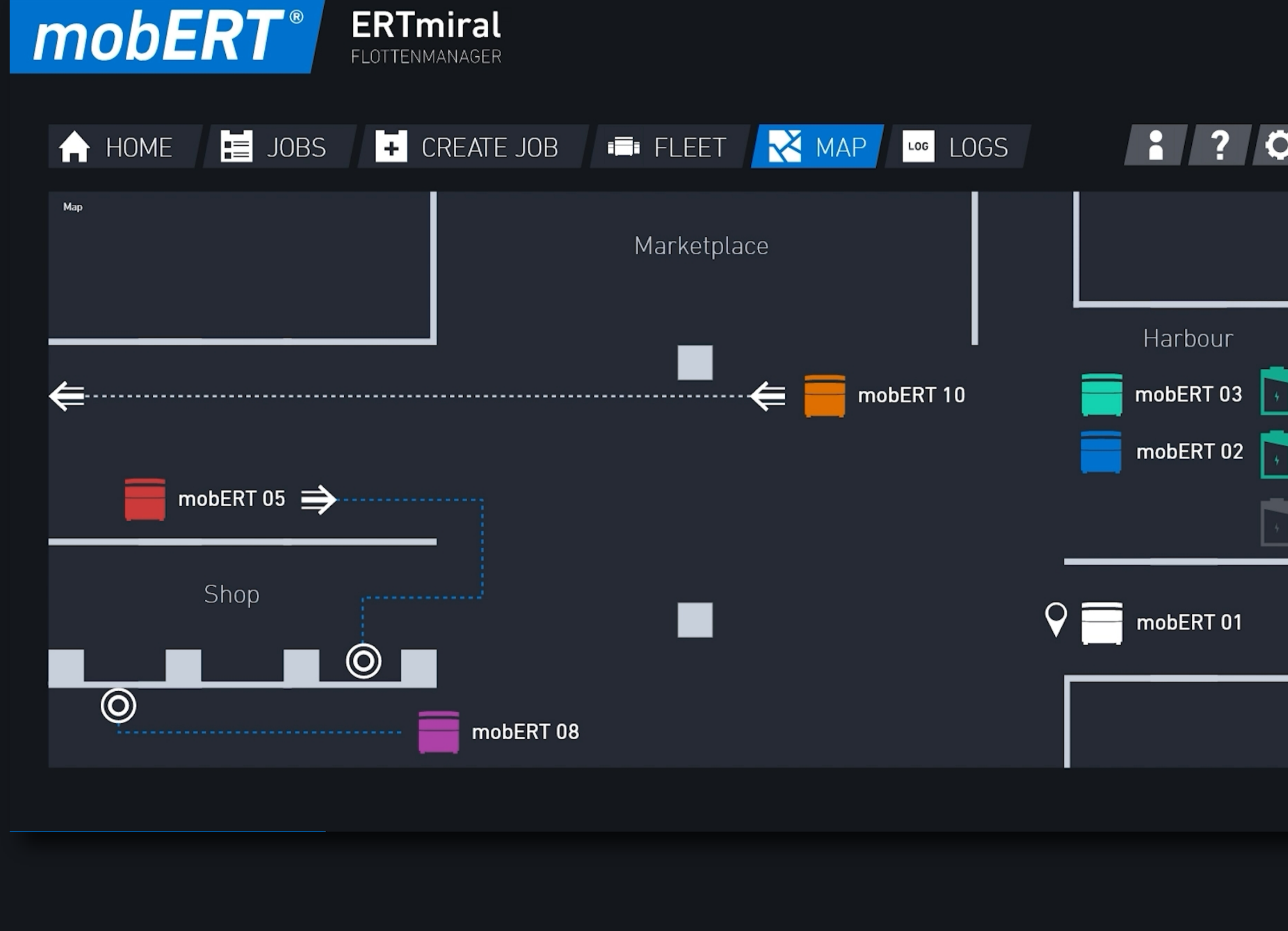
Create new template-based jobs easily and quickly. The wizard guides you comfortably through all necessary parameters.



## INTERACTIVE CARD

With the ERTmiral map you can keep an eye on the operational area of your fleet.

Current positions of the individual AMRs as well as their starting and destination points can be easily read.



## FLEET MANAGEMENT

Your fleet is clearly displayed here. ERTmiral provides you with detailed information about your AMRs here. Individual configuration, loading states, current position, destination, route as well as status and identification color of the individual robots can be viewed in this tab.

